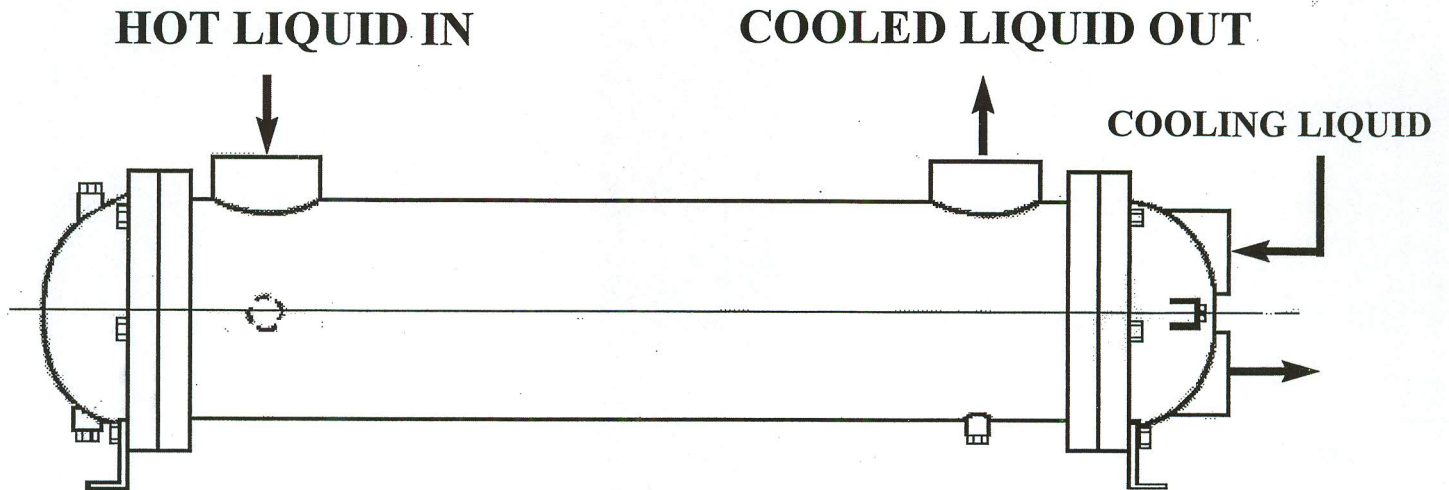
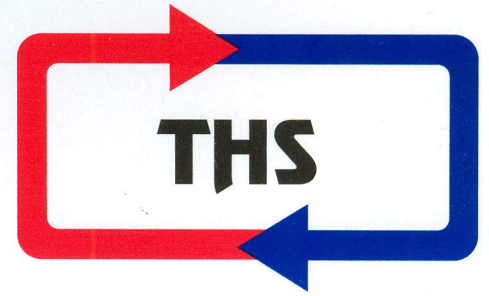


Shell & Tube Heat Exchangers

Fixed & Removable Tube Bundle
Watercooled Heat Exchangers



For Use In:

- Fluid Power Systems
- Injection Molding Machines
- Paper Machinery
- Mobile Equipment
- Hydraulic Presses
- Gear Drives
- Torque Convertors
- Machine Tools
- Compressors
- Chillers
- Steam & Air Applications

AVAILABLE:

- SINGLE PASS
- TWO PASS
- FOUR PASS

Standard Features:

- Operating Pressure Tubes, 150 PSI.
- Operating Pressure Shell, 250 PSI.
- Operating Temperature 350 (F).

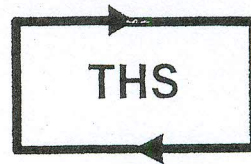
- Heat exchangers offered as direct replacements to existing oil coolers.
- All heat exchangers can be custom built to meet your specifications

THS

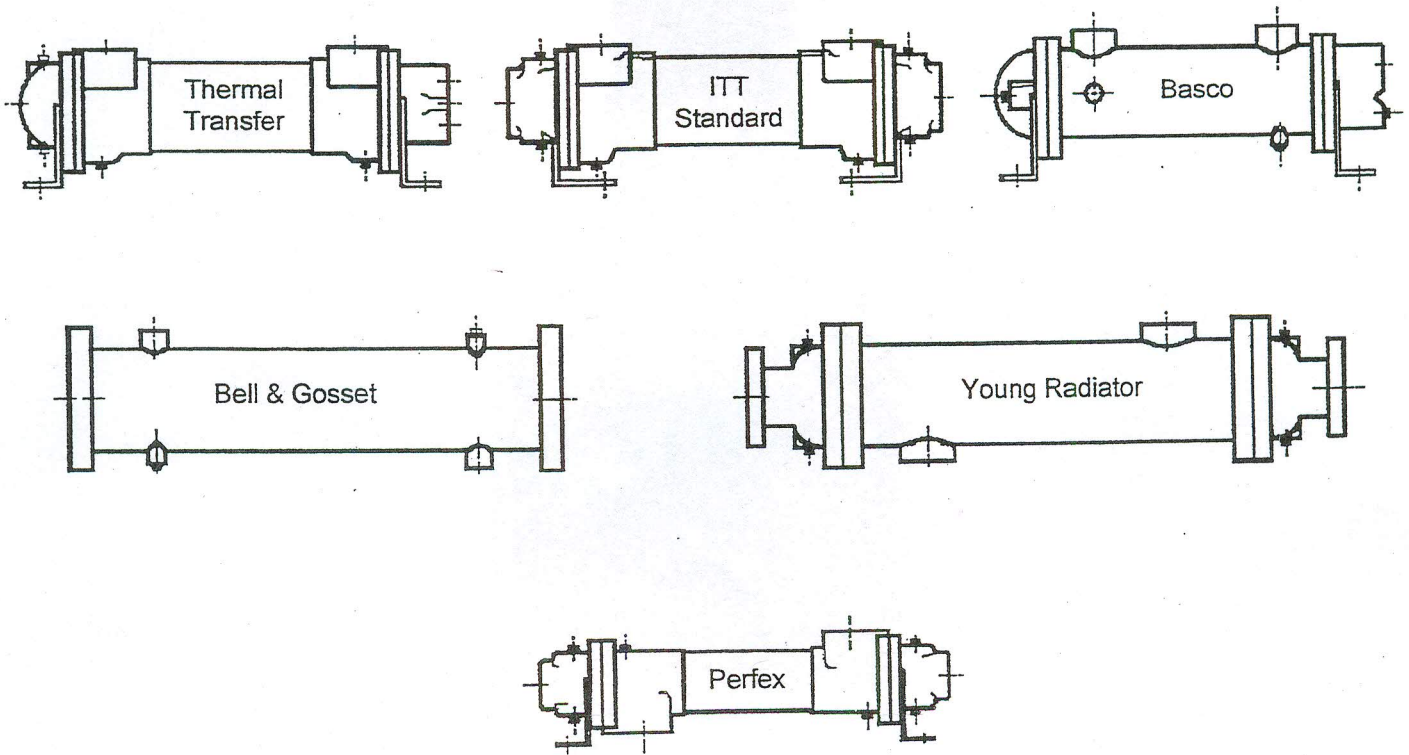
Heat Exchangers

Technical Heat Transfer Services, Inc.
P.O. Box 801
Amherst, NY 14226-0801
Phone: (716)-743-1855
Fax: (716)-743-0124

Shell & Tube Heat Exchangers



THS can help you save "\$\$" when you are looking to replace some of your Heat Exchangers. We offer 11 basic Shell & Tube configurations in which these can be offered in various custom designs upon request. We offer interchangeable units to such companies as Thermal Transfer, Young Radiator, ITT, Basco, Ketema, along with others in this industry.



Technical Heat Transfer Services, Inc.

P.O. Box 801

Amherst, NY 14226-0801

Phone: (716)-743-1855

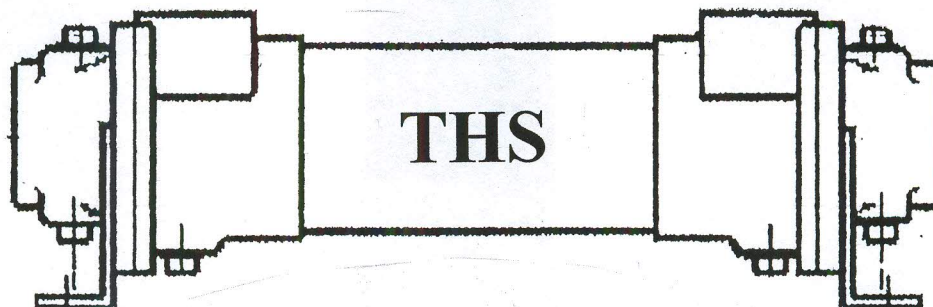
Fax: (716)-743-0124

TAB-Series

Shell & Tube Heat Exchangers Brass Shell

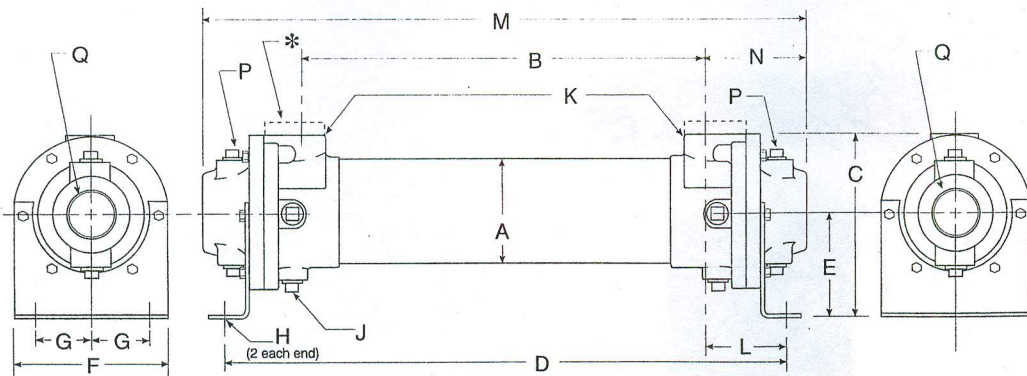
THS
**Technical Heat Transfer
 Services, Inc.**
 716-743-1855

- Brass Shell & Baffles(Optional Stainless Steel)
- Copper Tubes(Optional Copper Nickel, Stainless Steel)
- Forged Brass End Hubs(Optional Stainless Steel)
- Cast Iron End Bonnets(Optional Brass & Stainless Steel)
- Steel Mounting Brackets
- 150 PSI Operating Pressure @ 300 (F) TubeSide
- 300 PSI Operating Pressure @ 300 (F) ShellSide



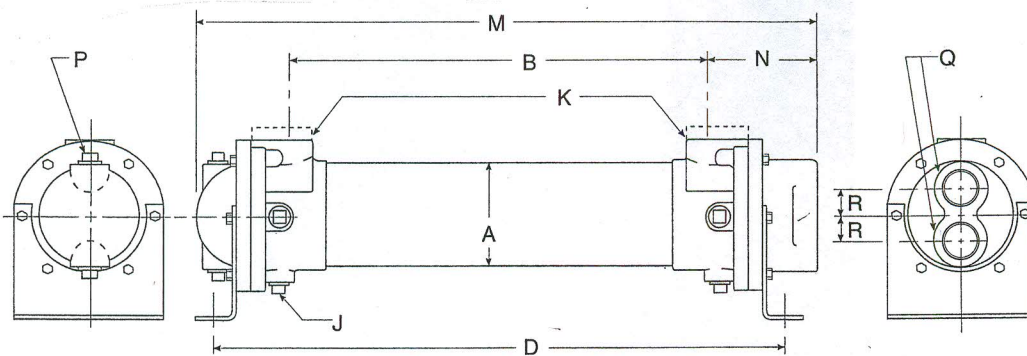
Model	A	B	C	D	E	F	G	H	J npt	K		L	Weight(lbs)
										npt	sae		
401 402	2.125	7.62 16.62	3.50	10.91 20.91	1.94	2.62	.88	.41	-	.50	# 8 3/4-16	1.72	7 10
701 702 703 704	3.656	7.00 16.00 25.00 34.00	6.25	12.38 21.38 30.38 39.38	3.62	5.25	1.50	.44 x 1.0	(2) .38	1.00	# 16 1-5/16-12	2.69	23 29 33 49
1002 1003 1004	5.125	15.50 24.50 33.50	7.38	21.62 30.62 39.62	4.00	6.75	2.00	.44 x 1.0	(6) .38	1.50	# 24 1-7/8-12	3.06	54 76 82
1202 1203 1204 1205 1206 1207 1208 1209 1210	6.125	14.62 23.50 32.38 41.38 50.50 59.50 68.38 77.38 86.38	8.81	21.50 30.38 39.25 48.25 57.38 66.38 75.25 84.25 93.25	4.75	7.50	2.50	.44 x 1.0	(6) .38	2.00	# 32 2-1/2-12	3.44	79 98 115 130 150 170 190 210 230
1602 1603 1604 1605 1606 1607 1608 1609 1610	8.00	13.60 22.60 31.60 40.60 49.60 58.60 67.60 76.60 85.60	12.13	22.38 31.38 40.38 49.38 58.38 67.38 76.38 85.38 94.38	6.50	10.00	3.50	.44 x 1.0	(6) .38	3.00	3.0" Four Bolt Flange	4.39	145 170 200 225 250 275 315 350 390

TAB-Series "Brass Shell"



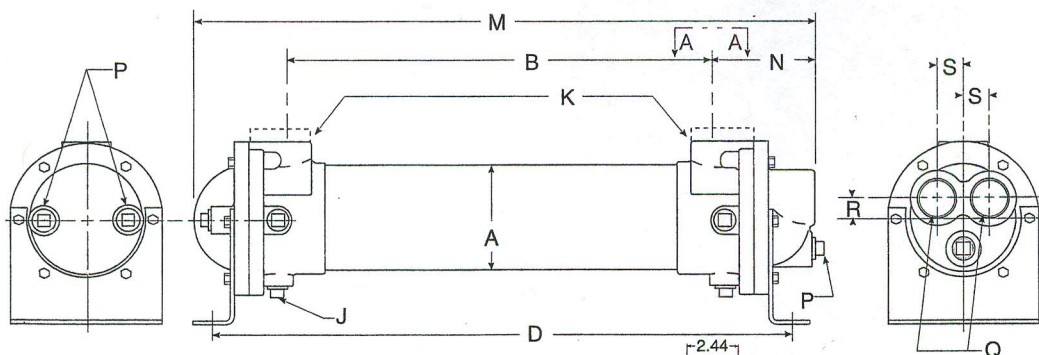
SINGLE PASS

Model	M	N	P	Q
401	11.24			
402	20.24	1.81	-	1.00
701	13.47			
702	22.47	3.24	(4) .38	1.50
703	31.47			
704	40.47			
1002	23.60			
1003	32.60	4.05	(4) .38	2.00
1004	41.60			
1202	24.38			
1203	33.25			
1204	42.12			
1205	51.12	4.56	(4) .50	3.0
1206	60.25			
1207	69.25			
1208	78.12			
1209	87.12			
1210	96.12			
1602	26.62			
1603	35.62			
1604	44.62			
1605	53.62	6.52	(4) .50	4.00
1606	62.62			
1607	71.62			
1608	80.62			
1609	89.62			
1610	98.62			



TWO PASS

Model	M	N	P	Q	R
701	13.28				
702	22.28				
703	31.28	3.30	(2) .38	1.00	.88
704	40.28				
1002	23.29				
1003	32.29	3.8	(2) .38	1.50	1.19
1004	41.29				
1202	23.94				
1203	32.81				
1204	41.69				
1205	50.69	4.56	(2) .50	2.00	1.44
1206	59.81				
1207	68.81				
1208	77.69				
1209	86.69				
1210	95.69				
1602	25.10				
1603	34.10				
1604	43.10				
1605	52.10	6.08	(2) .50	2.50	1.88
1606	61.10				
1607	70.10				
1608	79.10				
1609	88.10				
1610	97.10				



FOUR PASS

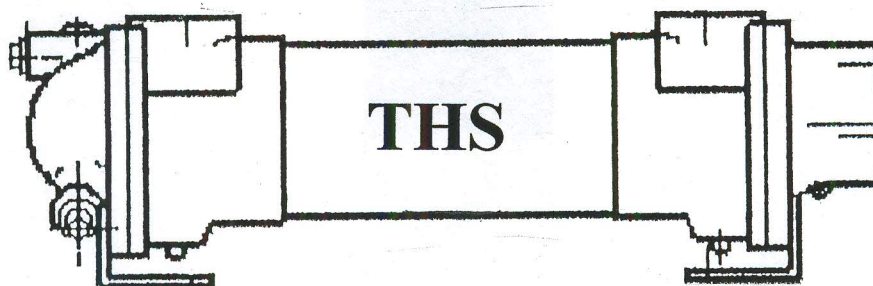
Model	M	N	P	Q	R	S
701	13.42					
702	22.42					
703	31.42	3.24	(3) .38	.75	.62	.88
704	40.42					
1002	23.55					
1003	32.55	4.06	(2) .38	1.00	.75	1.19
1004	41.55					
1202	24.44					
1203	33.31					
1204	42.19					
1205	51.19	4.90	(2) .38	1.50	1.06	1.44
1206	60.31					
1207	69.31					
1208	78.19					
1209	87.19					
1210	96.19					
1602	26.72					
1603	35.72					
1604	44.72					
1605	53.72	6.48	(3) .50	2.00	1.38	1.88
1606	62.72					
1607	71.72					
1608	80.72					
1609	89.72					
1610	98.72					

TAA-Series

Shell & Tube Heat Exchangers Brass Shell

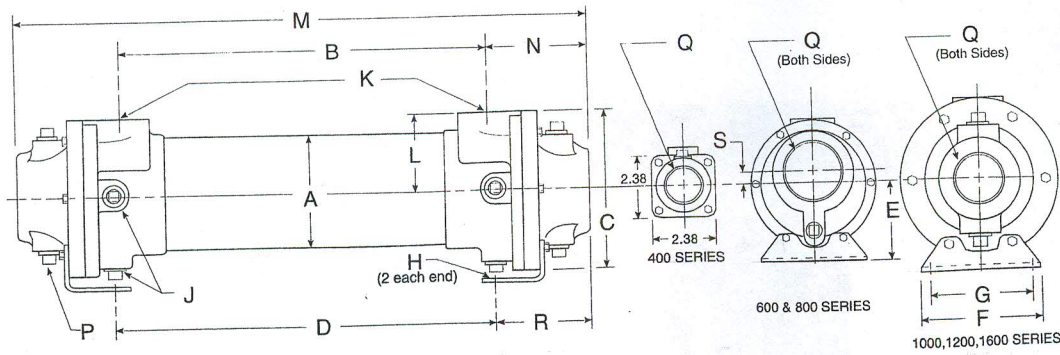
THS
**Technical Heat Transfer
 Services, Inc.**
716-743-1855

- Brass Shell & Baffles(Optional Stainless Steel)
- Copper Tubes(Optional Copper Nickel, Stainless Steel)
- Forged Brass End Hubs(Optional Stainless Steel)
- Cast Iron End Bonnets(Optional Brass & Stainless Steel)
- Steel Mounting Brackets
- 150 PSI Operating Pressure @ 300 (F) TubeSide
- 300 PSI Operating Pressure @ 300 (F) ShellSide



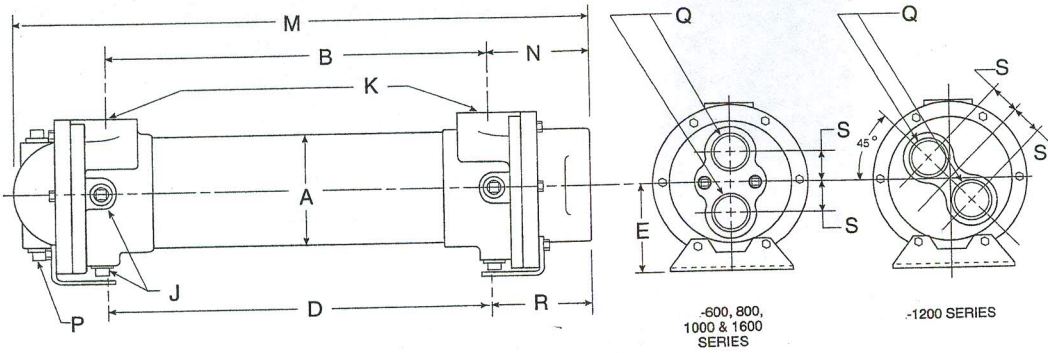
Model	A	B	C	D	E	F	G	H	J npt	K		L	Weight(lbs)
										npt	#		
408	2.125	6.25	-	-	-	-	-	-	-	.50	#8 3/4-16	1.69	7
608 614 624	3.125	6.12 12.12 22.12	4.19	5.12 11.12 21.12	2.44	3.50	2.50	.38 x .88	(2) .25	1.00	# 16 1-5/16-12	2.44	12 16 20
814 824 836	4.125	11.12 21.12 33.12	5.88	12.88 22.88 34.88	3.50	4.75	3.50	.50 x 1.6	(6) .38	1.50	# 24 1-7/8-12	3.12	37 47 67
1014 1024 1036	5.125	11.12 21.12 33.12	6.50	11.75 21.75 33.75	3.75	5.00	4.00	.50 x .88	(6) .38	1.50	# 24 1-7/8-12	3.62	45 60 82
1224 1236 1248 1260 1272	6.125	20.50 32.50 44.50 56.50 68.50	7.50	21.50 33.50 45.50 57.50 69.50	4.12	6.00	5.00	.50 x .88	(6) .38	2.00	# 32 2-1/2-12	4.25	90 110 130 150 180
1624 1636 1648 1660 1672 1684	8.00	19.00 31.00 43.00 55.00 67.00 79.00	9.75	20.50 32.50 44.50 56.50 68.50 80.50	5.38	8.25	7.00	.62 x 1.1	(6) .38	3.00	3.0" Four Bolt Flange	5.62	160 185 205 235 280 320

TAA-Series "Brass Shell"



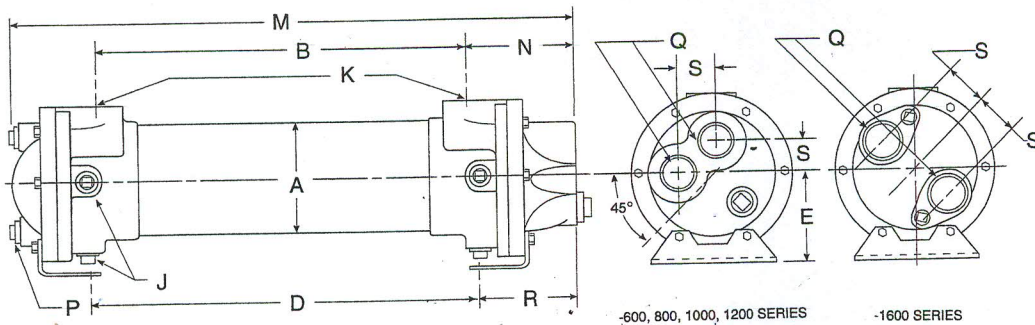
Model	M	N	P	Q	R	S
408	11.00	2.38	-	1.00	-	-
608	11.25	2.56	(2)	1.50	3.06	.38
614	17.25		.38			
624	27.75					
814	18.00	3.44	(2)	2.00	2.56	.50
824	28.00		.38			
836	40.00					
1014	18.50	3.69	(4)	2.50	3.38	-
1024	28.50		.38			
1036	40.50					
1224	29.25	4.25	(4)	3.0	3.75	-
1236	41.25					
1248	53.25					
1260	65.25					
1272	77.25					
1624	31.25	6.52	(4)	4.00	5.25	-
1636	43.25					
1648	55.25					
1660	67.25					
1672	79.25					
1672	79.25					
1684	91.25					

SINGLE PASS



Model	M	N	P	Q	R	S
608	10.75	2.44	(2)	1.00	2.94	1.00
614	16.75		.38			
624	26.75					
814	17.62	3.44	(2)	1.25	2.56	1.19
824	27.62		.38			
836	39.62					
1014	18.50	3.69	(4)	1.50	3.50	1.50
1024	28.50		.38			
1036	40.50					
1224	28.75	4.25	(4)	2.0	3.75	1.56
1236	40.75					
1248	52.75					
1260	64.75					
1272	76.75					
1624	30.50	6.00	(2)	2.50	5.25	2.25
1636	42.50					
1648	54.50					
1660	66.50					
1672	78.50					
1672	78.50					
1684	90.50					

TWO PASS



Model	M	N	P	Q	R	S
608	10.88	2.44	(2)	.75	2.81	1.00
614	16.88		.38			
624	26.88					
814	17.62	3.44	(2)	.75	2.56	1.06
824	27.62		.38			
836	39.62					
1014	18.50	3.80	(4)	1.00	3.25	1.69
1024	28.50		.38			
1036	40.50					
1224	29.50	4.56	(3)	1.50	3.75	2.00
1236	41.50					
1248	53.50					
1260	65.50					
1272	77.50					
1624	30.75	6.08	(4)	2.00	5.25	2.62
1636	42.75					
1648	54.75					
1660	66.75					
1672	78.75					
1672	78.75					
1684	90.75					

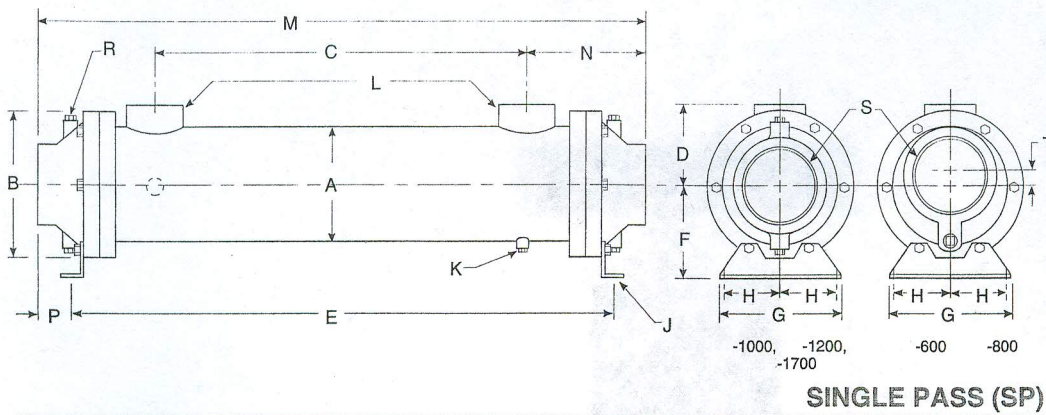
FOUR PASS

TT-Series

Shell & Tube Heat Exchangers

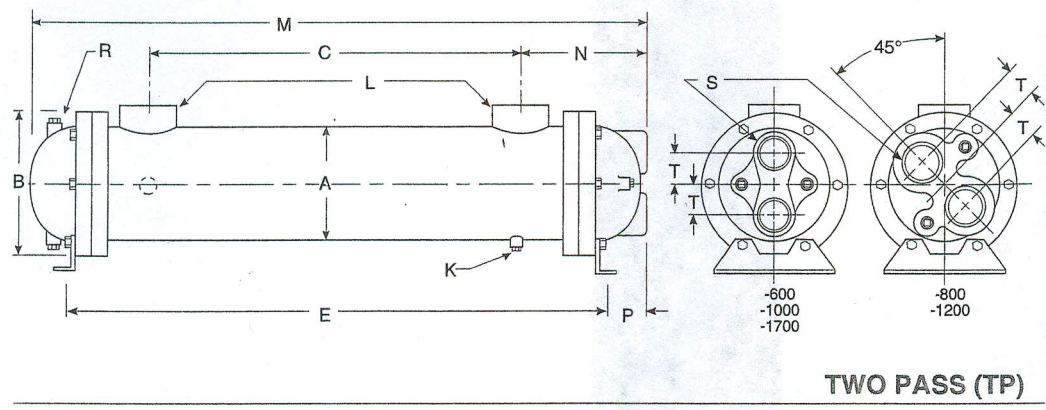
THS

Technical Heat Transfer Services, Inc.



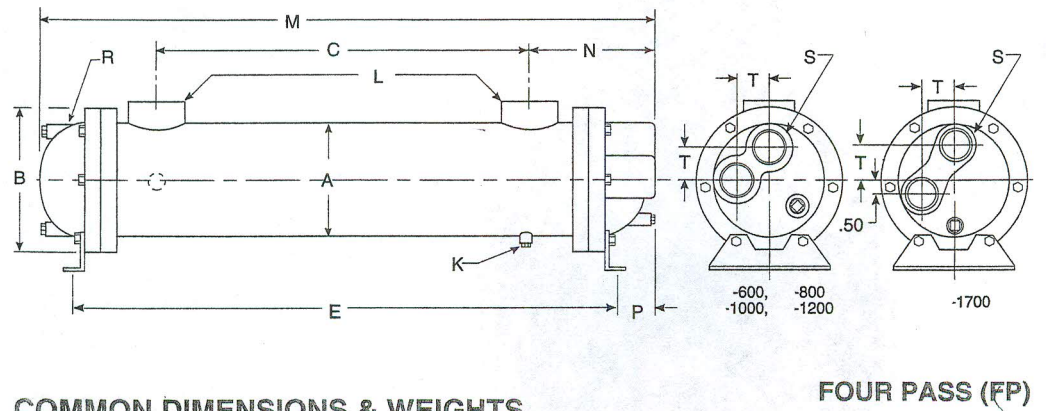
SINGLE PASS (SP)

Model	M	N	P	R NPT	S NPT	T
614	17.18	3.59	.40	(2) .38	1.50	.38
624	27.18					
814	17.88					
824	27.88	4.44	.63	(2) .38	2.00	.50
836	39.88					
1014	19.09					
1024	29.09	5.05	.92	(4) .38	2.00	-
1036	41.09					
1224	30.00					
1236	42.00					
1248	54.00	5.88	1.43	(4) .50	3.00	-
1260	66.00					
1272	78.00					
1724	31.47					
1736	43.47					
1748	55.47	7.23	1.99	(4) .50	4.00	-
1760	67.47					
1772	79.47					
1784	91.47					



TWO PASS (TP)

Model	M	N	P	R NPT	S NPT	T
614	17.12	3.56	.38	(2) .38	1.00	1.00
624	27.12					
814	17.88					
824	27.88	4.44	.63	(2) .38	1.25	1.06
836	39.88					
1014	18.62					
1024	28.62	5.00	.94	(2) .38	1.50	1.19
1036	40.62					
1224	29.03					
1236	41.03					
1248	53.03	5.44	1.00	(2) .50	2.00	1.44
1260	65.03					
1272	77.03					
1724	30.62					
1736	42.62					
1748	54.62	7.06	1.81	(2) .50	2.50	1.88
1760	66.62					
1772	78.62					
1784	90.62					



FOUR PASS (FP)

Model	M	N	P	R NPT	S NPT	T
614	17.12	3.56	.38	(2) .38	.75	1.00
624	27.12					
814	17.88					
824	27.88	4.44	.63	(3) .38	.75	1.25
836	39.88					
1014	18.81					
1024	28.81	4.81	.75	(3) .38	1.00	1.69
1036	40.81					
1224	29.13					
1236	41.13					
1248	53.13	5.44	1.00	(3) .38	1.50	2.00
1260	65.13					
1272	77.13					
1724	29.86					
1736	41.86					
1748	53.86	7.06	1.81	(3) .50	2.00	2.50
1760	65.86					
1772	77.86					
1784	89.86					

COMMON DIMENSIONS & WEIGHTS

Model	A	B	C	D	E	F	G	H	J	K NPT	L		Approx. Weight	Model
											NPT	SAE		
614			10.00	2.31	16.38	2.75	4.18	1.62	.38φ x 0.88	(2) .25	1.00	#16 1 5/16-12	17	614
624	3.25	4.50	20.00		26.38								24	624
814			9.00		16.62								32	814
824	4.25	6.00	19.00	3.12	26.62	3.50	4.25	1.75	.44φ x 1.00	(2) .25	1.50	#24 1 7/8-12	41	824
836			31.00		38.62								53	836
1014			9.00		17.12								43	1014
1024	5.25	6.75	19.00	3.62	27.12	4.00	5.25	2.00	.44φ x 1.00	(2) .25	1.50	#24 1 7/8-12	57	1024
1036			31.00		39.12								72	1036
1224			18.25		27.13								85	1224
1236			30.25		39.13								110	1236
1248	6.25	7.75	42.25	4.16	51.13	4.50	6.25	2.50	.44φ x 1.00	(2) .38	2.00	#32 2 1/2-12	135	1248
1260			54.25		63.13								160	1260
1272			66.25		75.13								185	1272
1724			17.00		27.50								140	1724
1736			29.00		39.50								180	1736
1748	8.25	10.12	41.00	5.62	51.50	5.75	8.25	3.50	.44φ x 1.00	(2) .38	3.00	3.0" Four bolt Flange	220	1748
1760			53.00		63.50								260	1760
1772			65.00		75.50								300	1772
1784			77.00		87.50								340	1784

Shell: Steel
Baffles: Steel

Tubes: Copper
Tube Sheet: Steel

End Bonnets: Cast Iron
Mounting Brackets: Steel

Tube Side: 150 PSI @ 300 (F)
Shell Side: 300 PSI @ 300 (F)